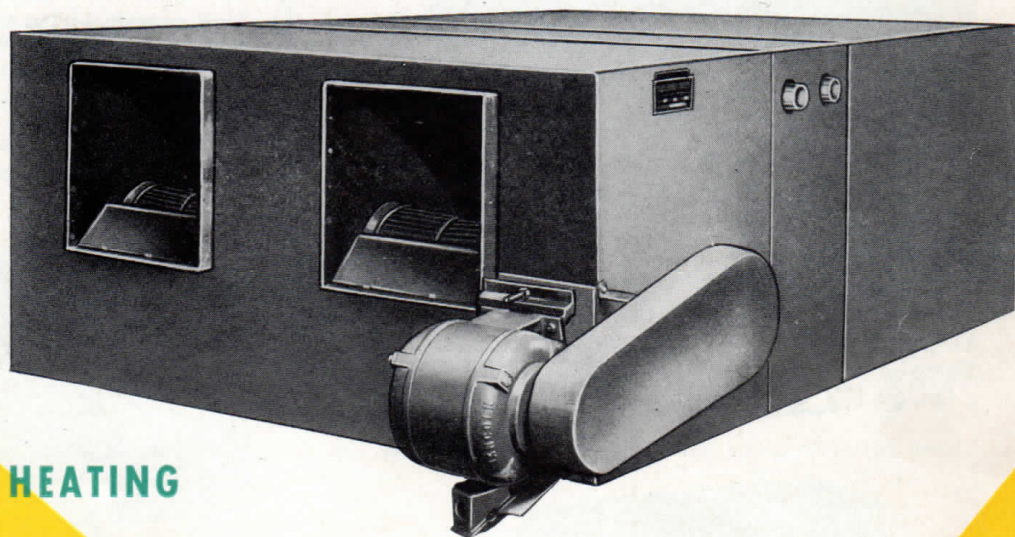




***Sheldons***

## **AIR CONDITIONING UNITS**



**HEATING  
COOLING  
VENTILATING  
HUMIDIFYING  
AIR CONDITIONING  
INDUSTRIAL PROCESSING**

**BULLETIN NO. 1020**

**SHELDONS ENGINEERING LIMITED**

**GALT**

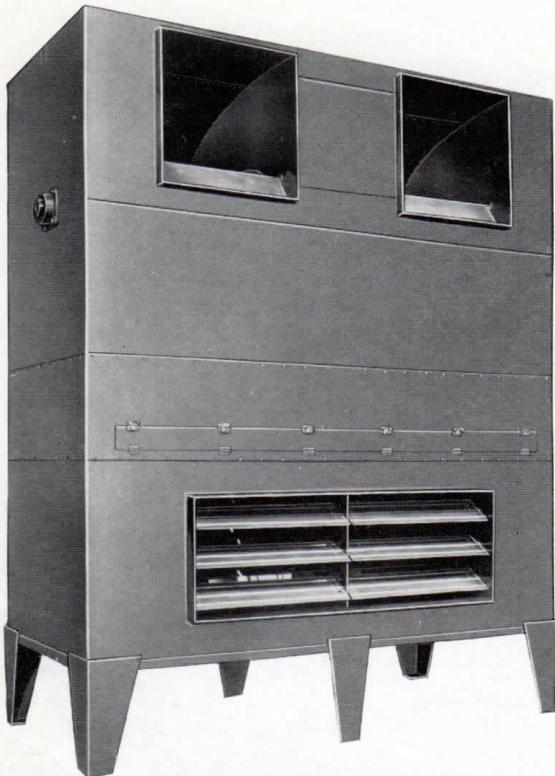
**ONTARIO**

**CANADA**

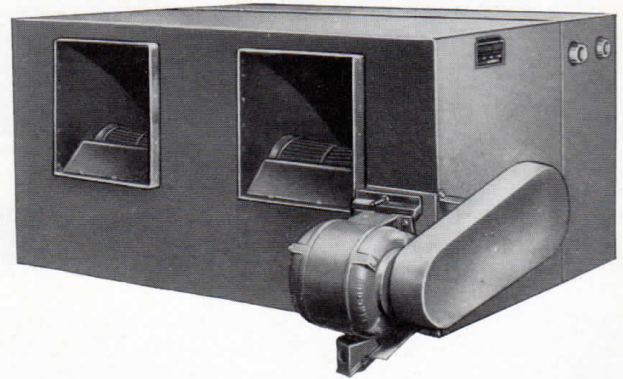




## AIR CONDITIONING UNITS

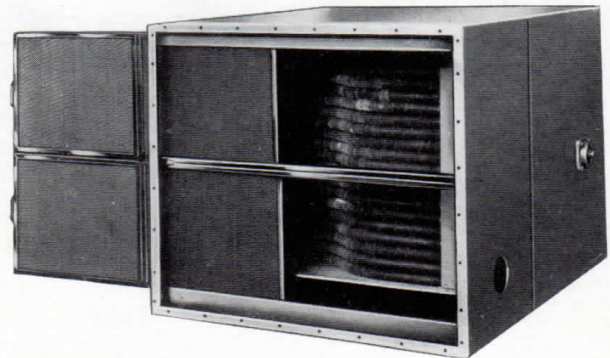


Vertical type Industrial Heater with R.A. and F.A. Dampers, filter and blast coil. Capacity: 18,000 c.f.m. @  $1\frac{1}{4}$ " S.P. through distributing ducts.

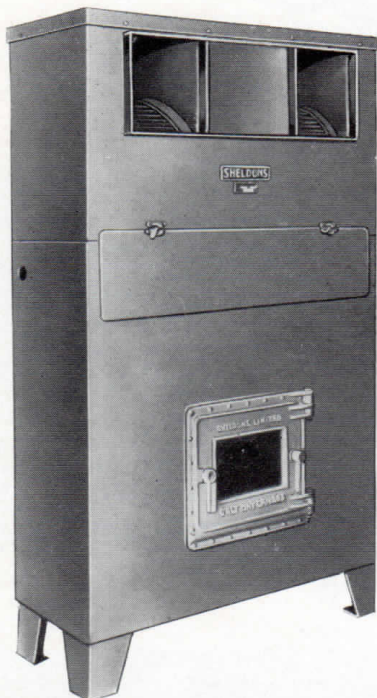


One of twelve Horizontal Ceiling type Units supplied to a well-known Canadian Manufacturing Plant. Each Unit consists of fan section, coil section, filter section and mixing box for F.A. and R.A. Heater coil can be removed through side of casing. Filters are removed through a drop door in bottom of casing.

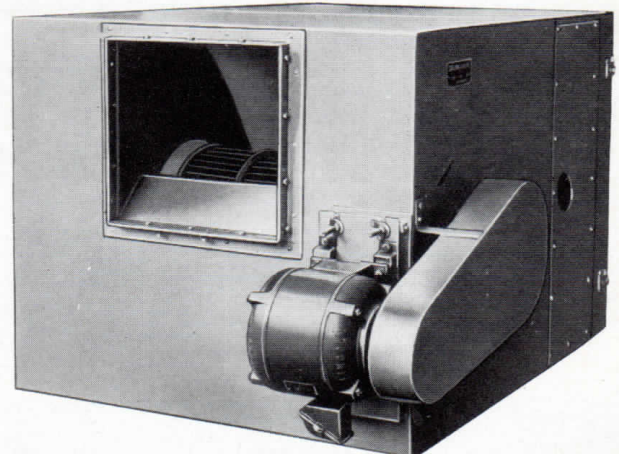
*This unit same as on front cover but without filter section and mixing box.*



Intake end of small Unit, showing easy method of removing filters through side of casing.



Small Conditioner for carrying on experimental work in a research laboratory.



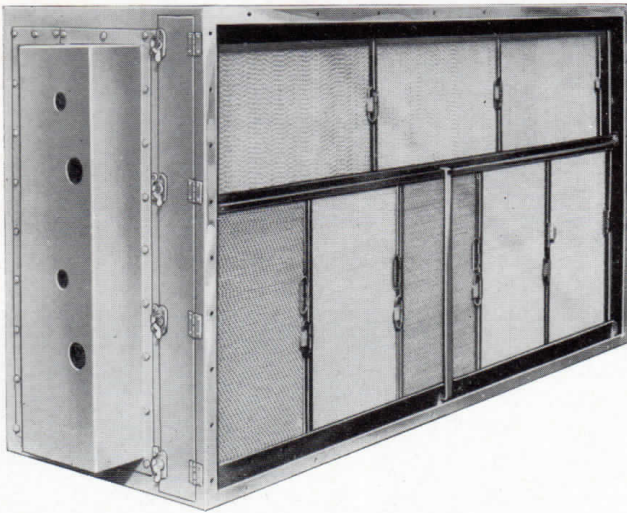
Single outlet Unit with Frost Proof coil and filter.

SHELDON A/C UNITS ARE AVAILABLE TO CREATE AND MAINTAIN A WIDE RANGE OF AIR CONDITIONS; FOR HUMAN COMFORT OR FOR INDUSTRIAL PROCESSING

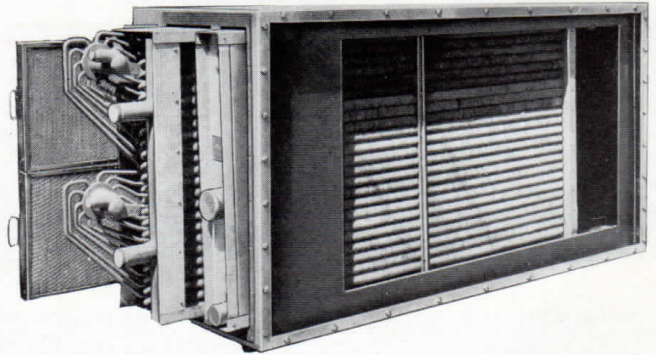




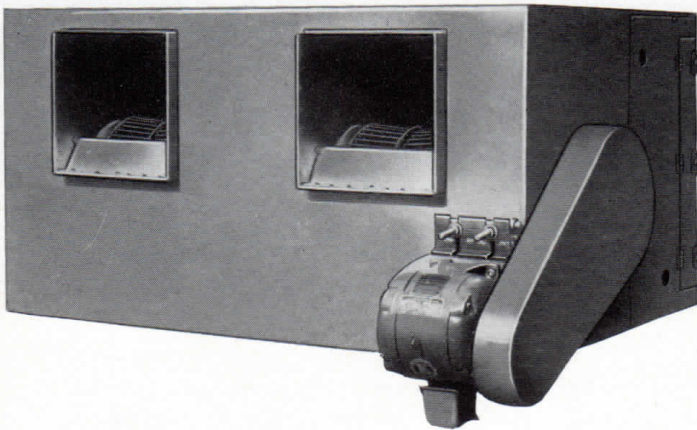
## AIR CONDITIONING UNITS



After assembly, the direct expansion headers as at left are enclosed in a casing as above. Casing is readily removed for servicing coil.

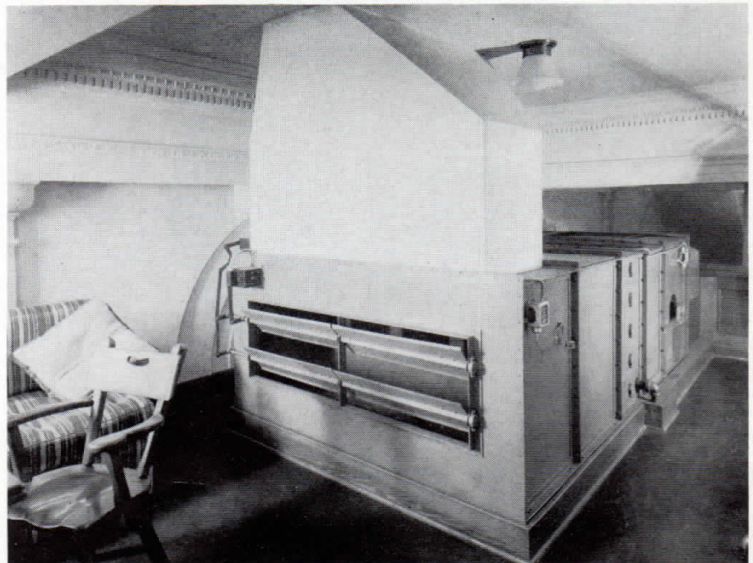


Coils and Filters are slipped into casing through the side. The above assembly consists of frost-proof coil, direct expansion serpentine coil with centrifugal headers and permanent, cleanable type air filters. All parts readily accessible.



Sheldon A/C Units contain one or more D.W.D.I. Fans can be furnished for any of the four Standard Directions of Discharge—Top Horizontal—Bottom Horizontal—Up Discharge—Down Discharge.

Air Conditioning Unit, installed for a prominent Canadian Trust Company to maintain year round "Human Comfort" in the banking room. In installations such as this, quietness of operation is essential.







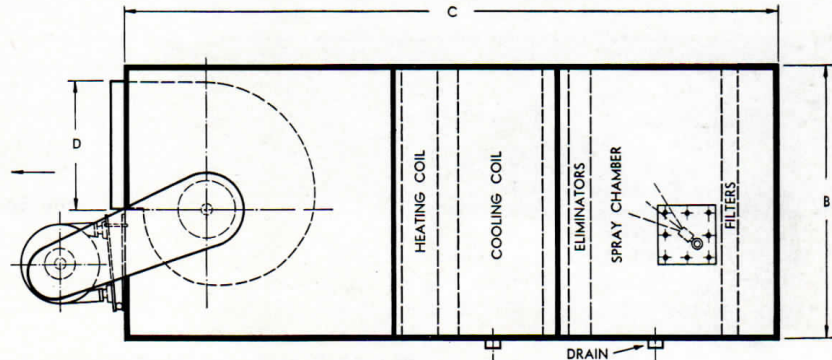
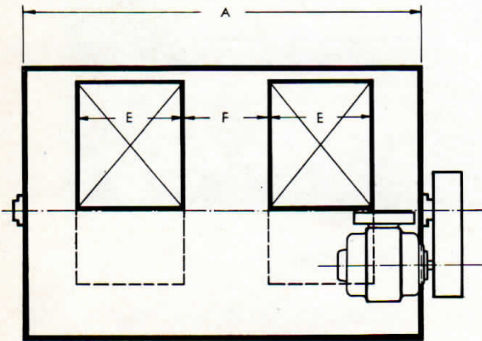
**Sheldons**

PHYSICAL DATA FOR BOTH HORIZONTAL & VERTICAL UNITS

### PHYSICAL DATA

UNIT SIZE	No. & SIZE FANS	BASIC CAPACITY C.F.M.	HEATING COILS		WATER COOLING COILS		D.E. COOLING COIL		FILTERS
			Face Area Sq. Ft.	Size	Face Area Sq. Ft.	Size	Face Area Sq. Ft.	Size	
12	1-#8	1400	2.04	19-10	2.63	2-12	2.65	2-12	1-20x25
16	1-#9	1800	2.62	23-10	3.30	26-12	3.35	26-12	2-16x20
20	1-#10	2200	3.43	26-12	5.00	26-18	5.01	26-18	2-16x25
25	1-#20	2600	4.81	2-21	5.83	26-21	5.83	26-21	2-20x25
32	2-#9	3600	6.18	3-18	7.10	36-18	7.12	36-18	3-16x25
40	2-#10	4400	7.27	3-21	9.51	4-21	9.51	4-21	4-16x25
50	2-#20	5300	9.31	46-18	10.75	46-21	10.75	46-21	6-16x20
64	2-#30	6500	10.95	46-21	13.70	5-24	13.68	5-24	6-20x20
80	2-#40	7900	13.41	56-21	17.11	5-12 5-18	17.19	5-12 5-18	6-20x25
100	2-#50	9700	16.48	6-24	20.62	6-12 6-18	20.70	6-12 6-18	8-20x25
125	2-#70	14400	24.27	7-12 7-18	28.96	2-7-18	28.96	2-7-18	10-20x25
160	2-#80	17400	29.46	86-12 86-18	37.40	2-9-18	37.40	2-9-18	12-20x25
200	3-#70	21500	36.42	2-96-21	41.60	2-10-18	41.60	2-10-18	14-20x25

### HORIZONTAL AIR CONDITIONING UNITS



R — Reheater  
C — Water cooling  
X — Direct Expansion cooling  
S — Mist spray humidifier  
W — Washer type humidifier  
P — Preheater  
F — Filter

Example: A No. 64 unit consisting of heating coil, D.E. cooling coil, humidifier and filter would be designated.

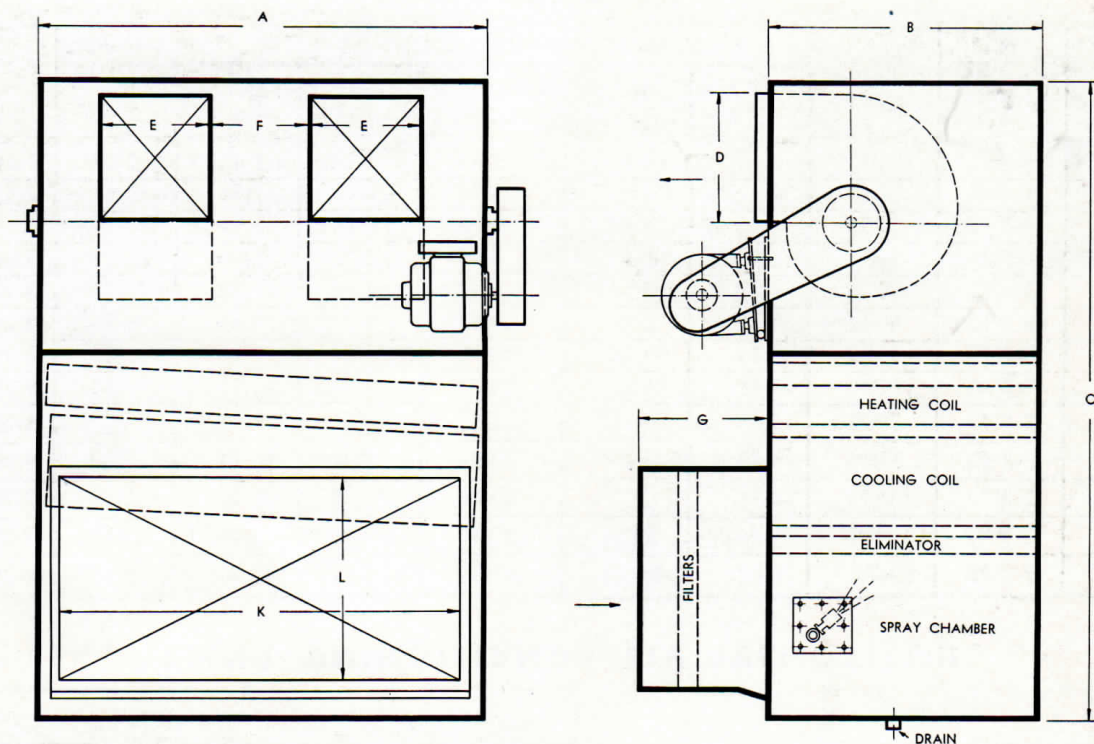
No. 64 Type "RXSF" HORIZONTAL AIR CONDITIONING UNIT.

### DIMENSIONS IN INCHES

UNIT SIZE	A	B	C				D	E	F
			RF	RCF RXF	RSF	RCSF RXSF			
12	32	27	47	63	65	81	13	12	—
16	38	29	49	65	67	83	14 1/2	13 1/2	—
20	38	33	53	69	71	87	16	14 3/4	—
25	40	38	58	74	76	92	17 1/2	16 1/4	—
32	51	33	53	69	71	87	14 1/2	13 1/2	11 1/4
40	56	38	58	74	76	92	16	14 3/4	12 1/4
50	62	38	58	74	76	92	17 1/2	16 1/4	13 1/2
64	68	44	64	80	82	98	19 1/2	18	15
80	75	54	74	90	92	108	21 1/2	20	16 1/2
100	82	54	74	90	92	108	23 3/4	22	18 1/4
125	101	62	82	98	100	116	29 1/2	27	22 1/4
160	120	62	82	98	100	116	32	29 1/2	24 1/2
200	140	62	82	98	100	116	29 1/2	27	22 1/4



# VERTICAL AIR CONDITIONING UNITS



R — Reheater  
 C — Water cooling  
 X — Direct Expansion cooling  
 S — Mist spray humidifier  
 W — Washer type humidifier  
 P — Preheater  
 F — Filter

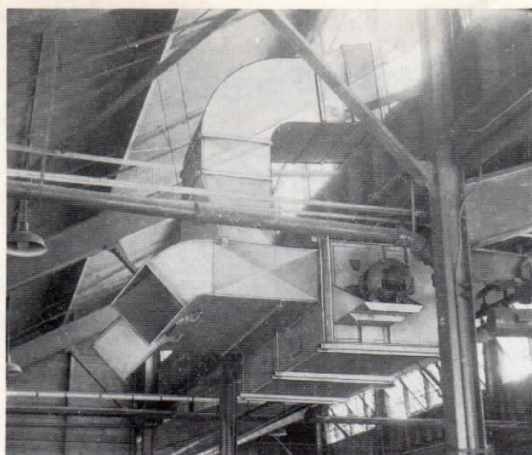
Example: A No. 64 unit consisting of heating coil, D.E. cooling coil, humidifier and filter would be designated.

No. 64 Type "RXSF" VERTICAL AIR CONDITIONING UNIT.

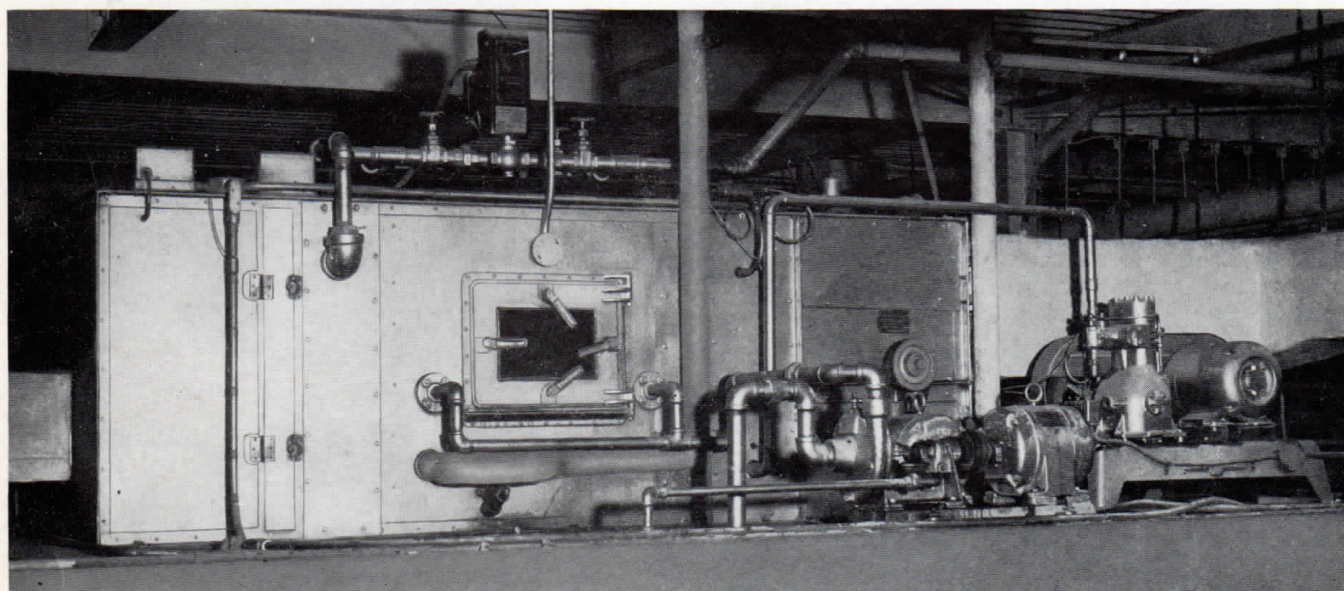
## DIMENSIONS IN INCHES

UNIT SIZE	A	B	C	D	E	F	G	K	L
12	32	27	72	13	12	—	12	22	17
16	38	29	72	14½	13½	—	12	29	17
20	38	33	80	16	14¾	—	15	29	22
25	40	38	86	17½	16¼	—	15	37	22
32	51	33	80	14½	13½	11¼	15	45	22
40	56	38	92	16	14¾	12¼	20	47	29
50	62	38	92	17½	16¼	13½	20	57	29
64	68	44	92	19½	18	15	20	57	37
80	75	54	105	21½	20	16½	20	57	47
100	82	54	105	23¾	22	18¼	20	77	47
125	101	62	114	29½	27	22¼	20	97	47
160	120	62	114	32	29½	24½	20	117	47
200	140	62	114	29½	27	22¼	20	137	47



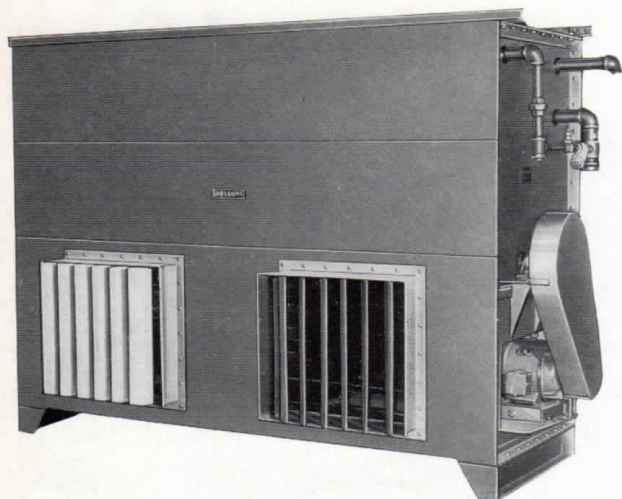


Heating Unit in a Metal Working Plant. During the winter season, heated air is delivered downward into the working zone. During hot weather, the Fans pick up hot air from the upper strata and discharge it outdoors. A manually-operated damper (not shown) directs the air either straight out or upwards. Ceiling-hung or wall-mounted Units save floor space.



Sheldon Air-Conditioning Apparatus in Industry maintains constant atmospheric conditions 365 days in the year. The apparatus shown here maintains

95°F. and 95% relative humidity in a fermenting room. Conditioning Units to maintain almost any set of conditions met with in industry can be supplied. Let us help you solve your air problems.



Air-Conditioning Units with "FLASH STEAM COILS" for cooling the condensate.

When high pressure steam is used for heating, there is considerable B.T.U. loss in the flash steam carried off in the condensate. Most of this heat can be removed by use of a flash steam coil to cool the condensate before it enters the return line. By use of a proper condensate coil, operating on 100 p.s.i., the condensate can be cooled to around 40°F. of the entering air temperature. Heat recovered from flash and cooling of the condensate amounts to 27% of the latent heat of the steam.

# **SHELDONS ENGINEERING LIMITED**

**GALT - ONTARIO - CANADA**

**SALES OFFICES - MONTREAL - OTTAWA - TORONTO - HAMILTON - LONDON**